
A close-up photograph of a modern house's exterior featuring a dark grey gutter and downpipe system. The gutter is installed under a light-colored roofline, and the downpipe runs vertically along a wall with dark horizontal siding. The background shows a clear blue sky with a hint of sunset or sunrise colors near the horizon.

MARLEY STRATUS DESIGN SERIES

The new generation of designer uPVC
spouting and downpipe systems



WHERE
STYLE
MEETS
DURABILITY



Marley Stratus Design Series

New Zealanders have trusted Marley spouting and downpipe systems to protect their homes from the elements for over 40 years. Marley is proud to introduce our new generation of **designer uPVC spouting and downpipe systems**. Inspired by nature the Marley Stratus Design Series is created with style and durability in mind.

When renovating, replacing existing spouting or building a new home, the Marley Stratus Design Series offers a premium sophisticated look while protecting your home from the elements. For an innovative and New Zealand manufactured solution insist on Marley Stratus Design Series for style without compromise.

DESIGN
INSPIRED

PREMIUM
STYLE

MADE
TO LAST

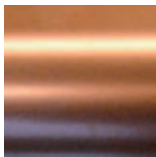
QUALITY
ASSURED

MARLEY SPOUTING + DOWNPIPE SYSTEMS

NOW AVAILABLE IN HYBRID-METALLIC FINISHES



TITANIUM



COPPER

MARLEY TYPHOON SPOUTING

Launching the Marley Stratus Design Series is Marley's Typhoon spouting and 80mm round downpipe systems available in titanium and copper hybrid-metallic finishes. The stylish metallic coloured finishes will enhance the style and character of your home.

Marley Typhoon spouting is designed with a high front to conceal untidy rooflines and will ensure the efficient flow of rain water. The stylish half round profile will complement any style of home from classic villa or beach house, to the modern home.

Create a seamless finish with the smooth lines of the internal bracket system, or for a striking design statement and ease of cleaning choose the external bracket system.

BELOW: A – EXTERNAL BRACKETS, B – INTERNAL BRACKETS



15 YEAR
GUARANTEE

U.V
RESISTANT

WILL NOT
RUST

100%
RECYCLABLE

MADE
IN NZ



Marley 80mm round downpipe in titanium hybrid-metallic finish.

MARLEY 80mm ROUND DOWNPIPE

New Zealand's number one selling round downpipe is a key component of the Marley Stratus Design Series rainwater system. The downpipe is available in 80mm O.D. with the option of titanium or copper hybrid-metallic finishes. Choose the metallic colour finish to match your spouting, make a bold design statement or blend in with the cladding or joinery.

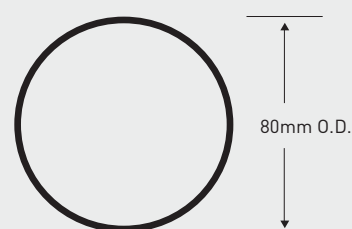
Marley downpipes are strong, easy to install and are designed to effectively remove rain water. Completing the downpipe system is a full range of matching components.

RAINHARVESTING SYSTEM COMPATIBLE

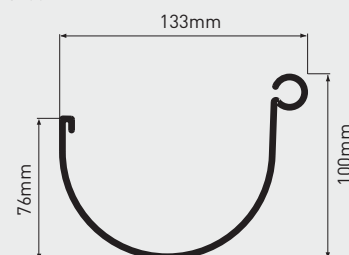
Marley spouting and downpipes are suitable for the collection of safe drinking water when used as part of the Marley Rainharvesting system.

All Marley uPVC spouting and downpipe systems have been tested and comply with AS/NZS 4020: 2005. **Testing of products for use in contact with drinking water.**

80MM ROUND DOWNPIPE



TYPHOON CROSS SECTIONAL AREA 6100mm²



DESIGNED FOR NEW ZEALAND CONDITIONS

PERFORMANCE AND DURABILITY

With most areas of New Zealand experiencing between 600–1600mm of rainfall throughout the year you will need a strong performing spouting and downpipe system. Marley Typhoon spouting has been designed for the efficient flow of rain water and when used in conjunction with Marley's 80mm round downpipe system can withstand prolonged heavy rainfall.

The co-extruded spouting and downpipe system with its coloured outer layer is guaranteed for 15 years and will never rust, rot or corrode, no matter what elements your home is exposed to. At the end of the lifecycle Marley Typhoon spouting can be recycled. For guaranteed performance we recommend you install a complete rainwater system including Typhoon spouting and Marley's 80mm round downpipe.

CO-EXTRUSION MANUFACTURING PROCESS

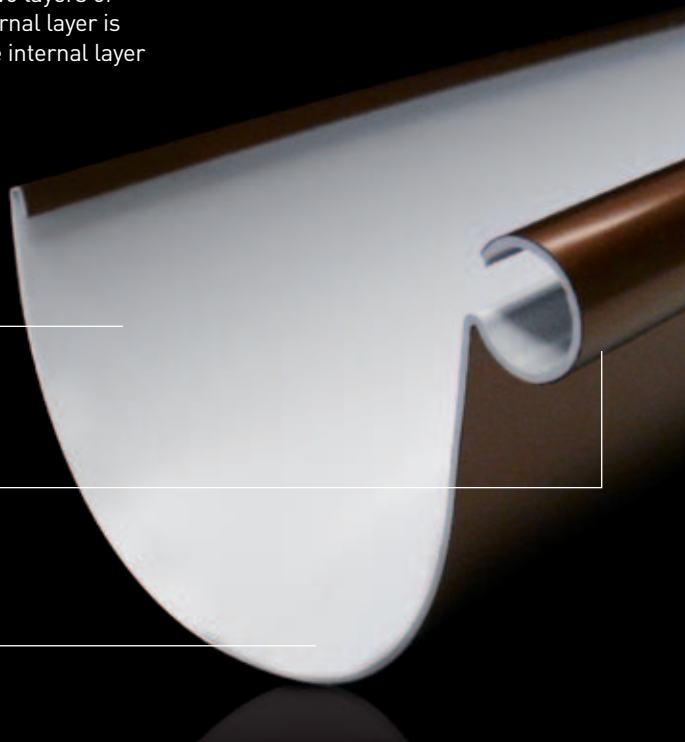
Marley has spent 10 years researching and perfecting processes and materials to bring you the Marley Stratus Design Series. Protection against New Zealand's unique UV rays and changeable climate conditions is achieved using the latest co-extrusion manufacturing technology.

The co-extrusion process forms and bonds simultaneously two layers of material with selected performance characteristics. The external layer is designed to provide high UV and weather resistance, while the internal layer provides strength and minimises thermal expansion.

Grey internal uPVC layer minimises thermal expansion by reducing excessive heat build-up in the profile

The coloured outer layer is an advanced engineered polymer which provides durable colour, with high UV and weather resistance

Co-extrusion technology combines layers for enhanced aesthetics and performance of trusted Marley uPVC spouting and downpipe systems





NZ MADE

A COMPLETE RAINWATER SYSTEM

In addition to the co-extruded half round spouting and 80mm round downpipe, the Marley Stratus Design Series includes a full range of moulded accessories in both Titanium and Copper. Components such as expansion joiners, brackets, stop-ends, internal and external angles, and downpipe bends provide a complete rainwater system. The system is installed using Marley's colour matching solvent cement.

These colour coordinated components:

- Ensure durability
- Simplify installation
- Provide a professional finish
- Allow versatile design options
- Enhance the system design

To view the complete range of products visit www.marley.co.nz or refer to the Marley Stratus Design Series design and installation guide.

ABOVE: Marley Typhoon half round spouting system and 80mm round downpipe in copper hybrid-metallic finish.

EASY TO MAINTAIN + LONGER LASTING

The use of advanced materials and technology ensure that Marley spouting and downpipe systems will never rust, rot or corrode.

Designed with a long life cycle, Marley spouting and downpipe systems are low maintenance saving you time and money in the long term.

Endorsed by Future-Proof Building, Marley spouting and downpipe systems are recognised for their resource responsibility, and quality assurance.



A striking
impression,
designed
to last.



15 YEAR
GUARANTEE

ABOVE: Marley Typhoon half round spouting system in titanium hybrid-metallic finish.

QUICK REFERENCE BENEFIT GUIDE

Style without compromise	✓
Complete spouting and downpipe system	✓
Will not rust, rot or corrode	✓
15 year guarantee	✓
Low maintenance	✓
Easy to install	✓
Designed for New Zealand conditions	✓
100% Recyclable	✓
Made in New Zealand	✓
Trusted New Zealand company with over 50 years manufacturing experience	✓

Committed to protecting our environment.

Marley spouting and downpipe systems are lightweight and energy efficient to transport. They are 100% recyclable, non-toxic and non-hazardous to the environment.

Marley is committed to creating environmentally sustainable processes and products and was the first plastic manufacturer in New Zealand to achieve ISO14001 registration (attained in 2004). Management systems and operating procedures are used to identify, monitor, control and reduce the impact of our operations and our products on the environment. Continual improvement of manufacturing processes and product formulations help to minimise Marley's carbon footprint.

As part of our commitment to ecologically sustainable development (ESD) principles, we measure ourselves against the following criteria:

- Water and resource conservation – Marley has installed systems to enable the reuse of water resulting in the reduction of water consumption by 17% since 2004
- Marley runs recycling programs with industry partners where plastic pipes from site are returned to Marley for recycling
- Energy consumption and management – Marley is committed to the reduction of its energy consumption and has targets in place to ensure this is achieved
- Avoiding the use of environmentally damaging raw materials – No lead or cadmium stabilisers and pigments are used in the Marley production process
- Waste minimisation by recycling process materials – Between 2004 and 2010 Marley reduced its waste to landfill by 43% and now less than 2% of production waste goes to landfill
- Pollution reduction – Marley does not discharge any trade waste into the public storm water system
- Protection of the natural environment – Marley is committed to minimising its impact on the natural environment and continually evaluates its processes and procedures to ensure this.





Visit us online at
www.marley.co.nz

You'll find resources such as
CAD drawings, installation
guides, technical advice and
show home locations on
our website.

Disclaimer: This brochure has been compiled by Marley New Zealand Limited ("The Company") to promote better understanding of the Company's products. The brochure is supplied subject to acknowledgment of the following conditions: The brochure is protected by Copyright and may not be copied or reproduced in any form or by any means in whole or in part without prior consent in writing by the Company. Product specifications, usage data and advisory information may change from time to time with advances in research and field experience. The Company reserves the right to make such changes at any time without notice. Correct use of the Company's products involve engineering judgments which cannot be properly made without full knowledge of all the conditions pertaining to each specific installation. The Company expressly disclaims all and any liability to any person whether supplied with this publication or not in respect of anything and of the consequences of anything done or omitted to be done by any such person in reliance whether whole or partial upon the whole or any part of the contents of this publication. No offer to trade, nor any conditions of trading, are expressed or implied by the issue or content of this manual. Nothing herein shall override the Company's Conditions of Sale, which may be obtained from the Registered Office or any Sales Office of the Company. This brochure is and shall remain the property of the Company, and shall be surrendered on demand to the Company. For full details on Marley's spouting and downpipe guarantee visit www.marley.co.nz

FPS.CO.NZ
FUTURE-PROOF BUILDING

For more information: **FREEPHONE 0800 MARLEY (0800 627539)**

www.marley.co.nz

an *OAliaxis* company

Rainwater Solutions

 **MARLEY**